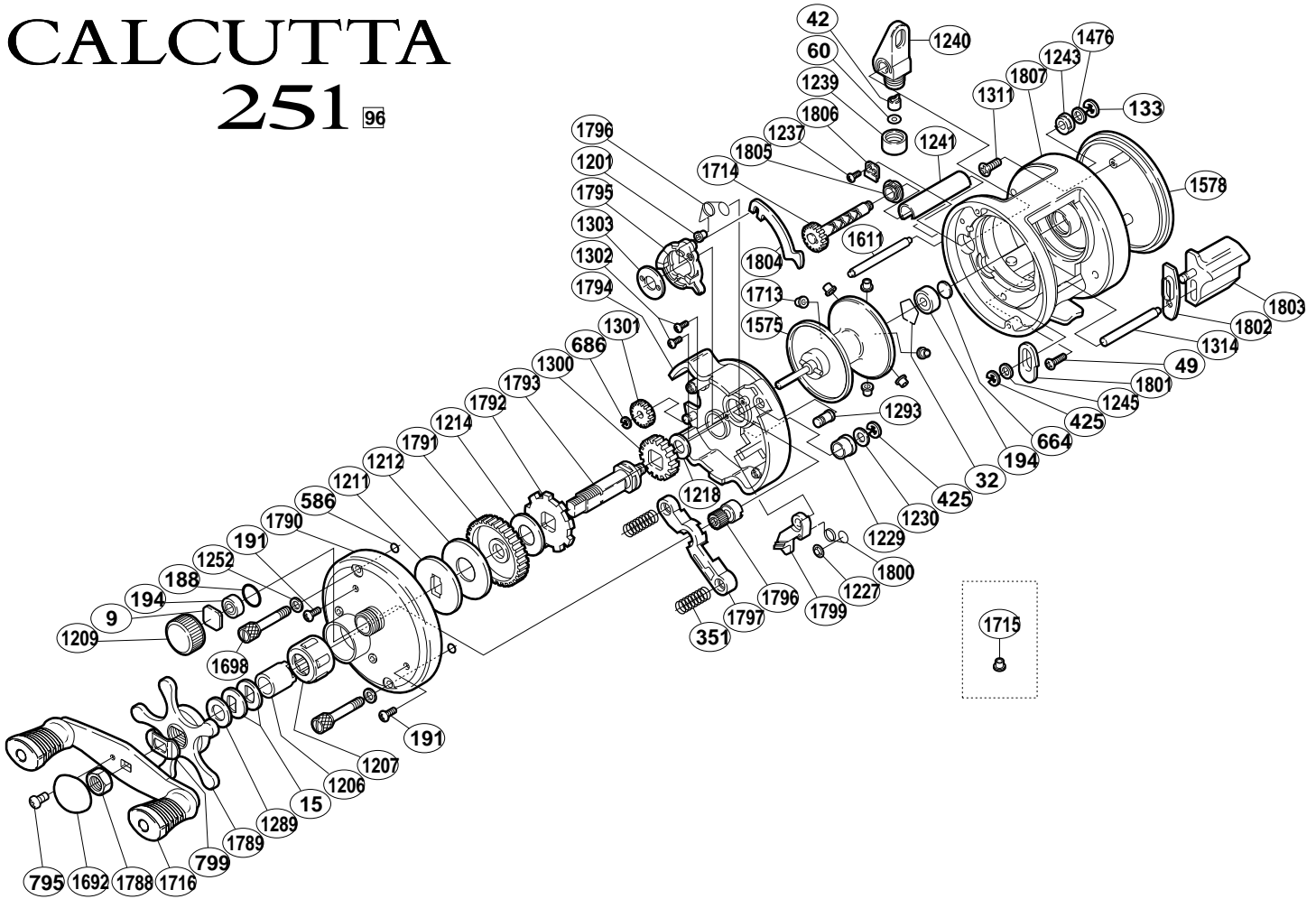


CALCUTTA 251 96



1997-10-7

BNT No.	PARTS NAMES	BNT No.	PARTS NAMES	BNT No.	PARTS NAMES
0009	Cast Control Spacer	1229	Drive Shaft Bushing	1789	Ster Drag
0015	Drag Spring Washer	1230	Drive Shaft Spacer	1790	Left Side Plate
0032	Bearing Retainer	1237	Worm Bushing (A) Retainer Screw	1791	Drive Gear
0042	Line Guide Pawl	1239	Pawl Cap	1792	Anti-Reverse Ratchet
0049	Right Side Plate Screw	1240	Line Guide	1793	Drive Shaft
0060	Spacer (optional)	1241	Level Wind Guard	1794	Set Plate
0133	Worm Shaft Retainer	1243	Worm Bushing (B)	1795	Clutch Cam
0188	"O" Ring	1245	Clutch Ber Support Spacer	1796	Retractor Spring
0191	Left Side Plate Screw	1252	Left Side Plate Bolt Washer	1797	Yoke
0194	Ball Bearing	1289	Ster Drag Spacer	1798	Pinion Gear
0351	Yoke Spring	1293	Retractor Spring Pin	1799	Clutch Pawl
0425	"E" Lock	1300	Idle Gear (A)	1800	Clutch Powl Spring
0586	Bolt Retainer	1301	Idle Gear (B)	1801	Clutch Ber Guide (A)
0664	Spacer (B)	1302	Clutch Cam Screw	1802	Clutch Ber Guide (B)
0686	Idle Gear (B) Retainer	1303	Clutch Cam Retainer	1803	Quick-Fire II Clutch Bar
0795	Handle Nut Plate Screw	1311	Right Side Plate Screw	1804	Clutch Plate
0799	Friction Washer	1314	Clutch Bar Support	1805	Worm Bushing (A)
1201	Retractor Spring Collar	1476	Worm Shaft Spacer	1806	Worm Bushing (A) Retainer
1206	Roller Clutch Inner Tube	1575	Spool Assembly	1807	Forget One-Piece Frame
1207	Roller Clutch Bearing	1578	Right Side Plate		
1209	Cast Control Cap	1611	Level Wind Guide		
1211	Key Washer	1692	Handle Nut Plate		
1212	Drag Washer (C)	1713	Brake Coller (Green)		
1214	Drag Washer (A)	1714	Worm Shaft		
1218	Idle Gear (A)	1716	Handle Assembly		
1227	Clutch Pawl Spring Retainer	1788	Handle Nut	1715	Brake Collar (Red)