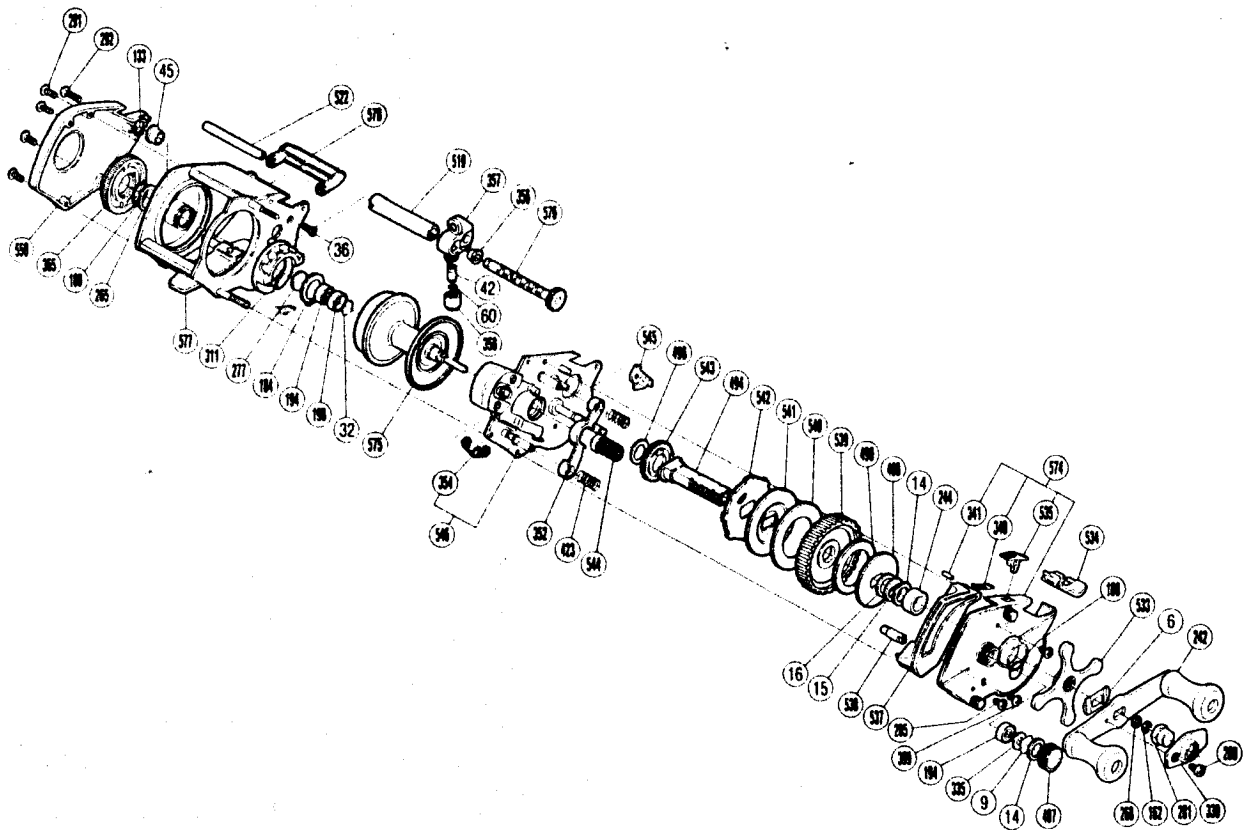


EXPLODED PARTS VIEWS OF BSM-2200W



PARTS LIST OF BSM-2200W

BNT No.	PARTS NAMES	BNT No.	PARTS NAMES
6	Friction Washer "A"	356	Worm Bearing "A"
9	Cast Control Spacer	357	Line Guide
14	Friction Washer "B"	358	Pawl Cap
15	Drag Spring Washer	365	Magnetic Control Dial
16	Friction Washer "C"	399	Retractor Guide Screw
32	Bearing Retainer	423	Yoke Spring
36	Stabilizer Bar Screw "A"	487	Cast Control Cap
42	Line Guide Pawl	489	Key Washer "A"
45	Worm Bearing "B"	490	Drag Washer
60	Spacer(optional)	494	Drive Shaft
133	Worm Shaft Retainer	496	Drive Shaft Washer "C"
162	Drive Shaft Retainer	519	Level Wind Guard
184	Magnet Retainer Lock	522	Stabilizer Bar
188	O Ring	533	Star Drag
194	Ball Bearing	534	Right Side Plate Cover
198	Bearing Spacer	535	Anti-Reverse Switch
242	Handle Assembly	537	Clutch Button Attachment
244	Bushing	538	Retractor Guide
265	Spacer(optional)	539	Drive Gear
268	Drive Shaft Washer "A"	540	Drive Shaft Washer "B"
277	Bearing Spacer "B"	541	Key Washer "B"
280	Handle Nut Plate Screw	542	Anti-Reverse Ratchet
281	Handle Nut	543	Idle Gear
285	Right Side Plate Screw	544	Pinion Gear
291	Left Side Plate Screw	545	Anti-Reverse Pawl
292	Stabilizer Bar Screw "B"	546	Set Plate Assembly
311	Magnet Retainer	550	Left Side Plate
330	Handle Nut Plate	574	Right Side Plate
335	Bearing Washer "A"	575	Spool
340	Switch Spring	576	Worm Shaft
341	Switch Spring Lock	577	Frame
352	Yoke	578	Level Wind Protector
354	Retractor Spring		