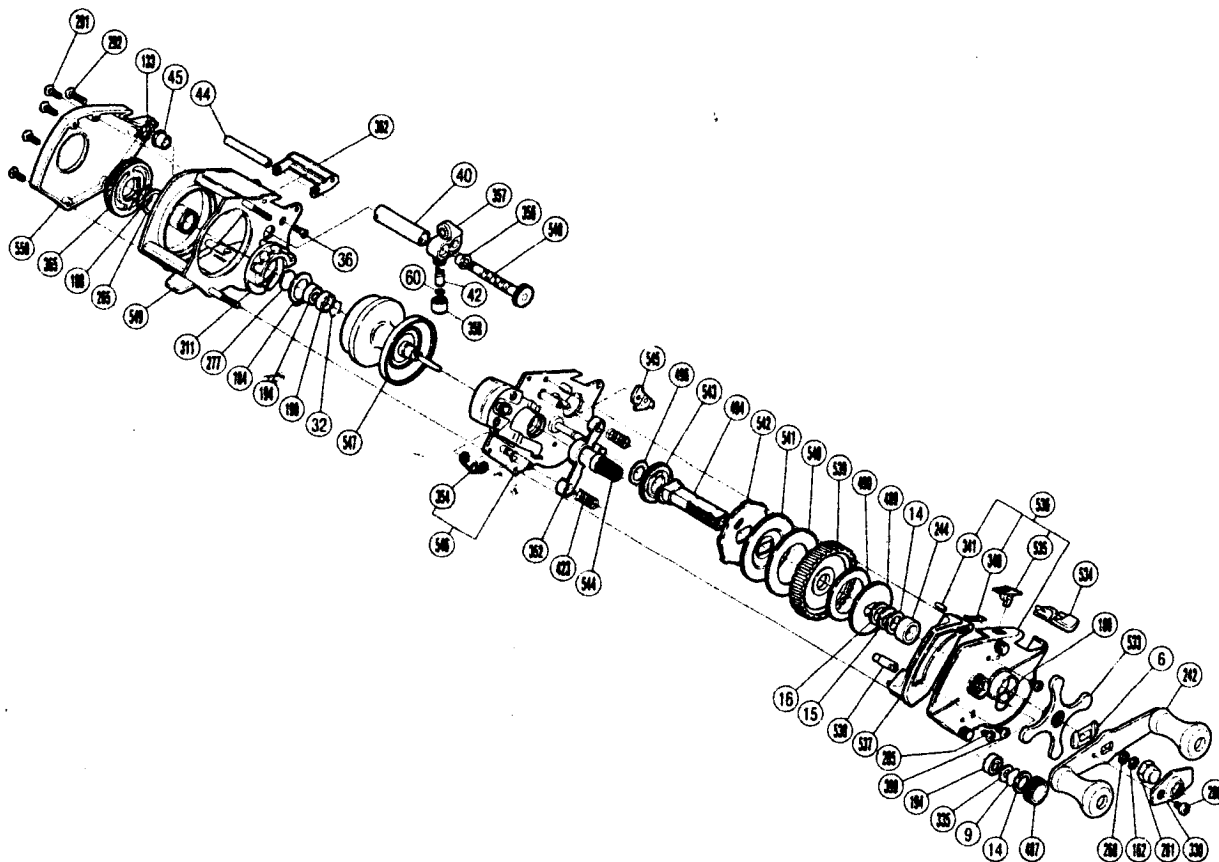


EXPLODED PARTS VIEWS OF BSM-2200



PARTS LIST OF BSM-2200

BNT No.	PARTS NAMES	BNT No.	PARTS NAMES
6	Friction Washer "A"	352	Yoke
9	Cast Control Spacer	354	Retractor Spring
14	Friction Washer "B"	356	Worm Bearing "A"
15	Drag Spring Washer	357	Line Guide
16	Friction Washer "C"	358	Pawl Cap
32	Bearing Retainer	362	Level Wind Protector
36	Stabilizer Bar Screw "A"	365	Magnetic Control Dial
40	Level Wind Guard	399	Retractor Guide Screw
42	Line Guide Pawl	423	Yoke Spring
44	Stabilizer Bar	487	Cast Control Cap
45	Worm Bearing "B"	489	Key Washer "A"
60	Spacer(optional)	490	Drag Washer
133	Worm Shaft Retainer	494	Drive Shaft
162	Drive Shaft Retainer	496	Drive Shaft Washer "C"
184	Magnet Retainer Lock	533	Star Drag
188	O Ring	534	Right Side Plate Cover
194	Ball Bearing	535	Anti-Reverse Switch
198	Bearing Spacer	536	Right Side Plate
242	Handle Assembly	537	Clutch Button Attachment
244	Bushing	538	Retractor Guide
265	Spacer(optional)	539	Drive Gear
268	Drive Shaft Washer "A"	540	Drive Shaft Washer "B"
277	Bearing Spacer "B"	541	Key Washer "B"
280	Handle Nut Plate Screw	542	Anti-Reverse Ratchet
281	Handle Nut	543	Idle Gear
285	Right Side Plate Screw	544	Pinion Gear
291	Left Side Plate Screw	545	Anti-Reverse Pawl
292	Stabilizer Bar Screw "B"	546	Set Plate Assembly
311	Magnet Retainer	547	Spool
330	Handle Nut Plate	548	Worm Shaft
335	Bearing Washer "A"	549	Frame
340	Switch Spring	550	Left Side Plate
341	Switch Spring Lock		