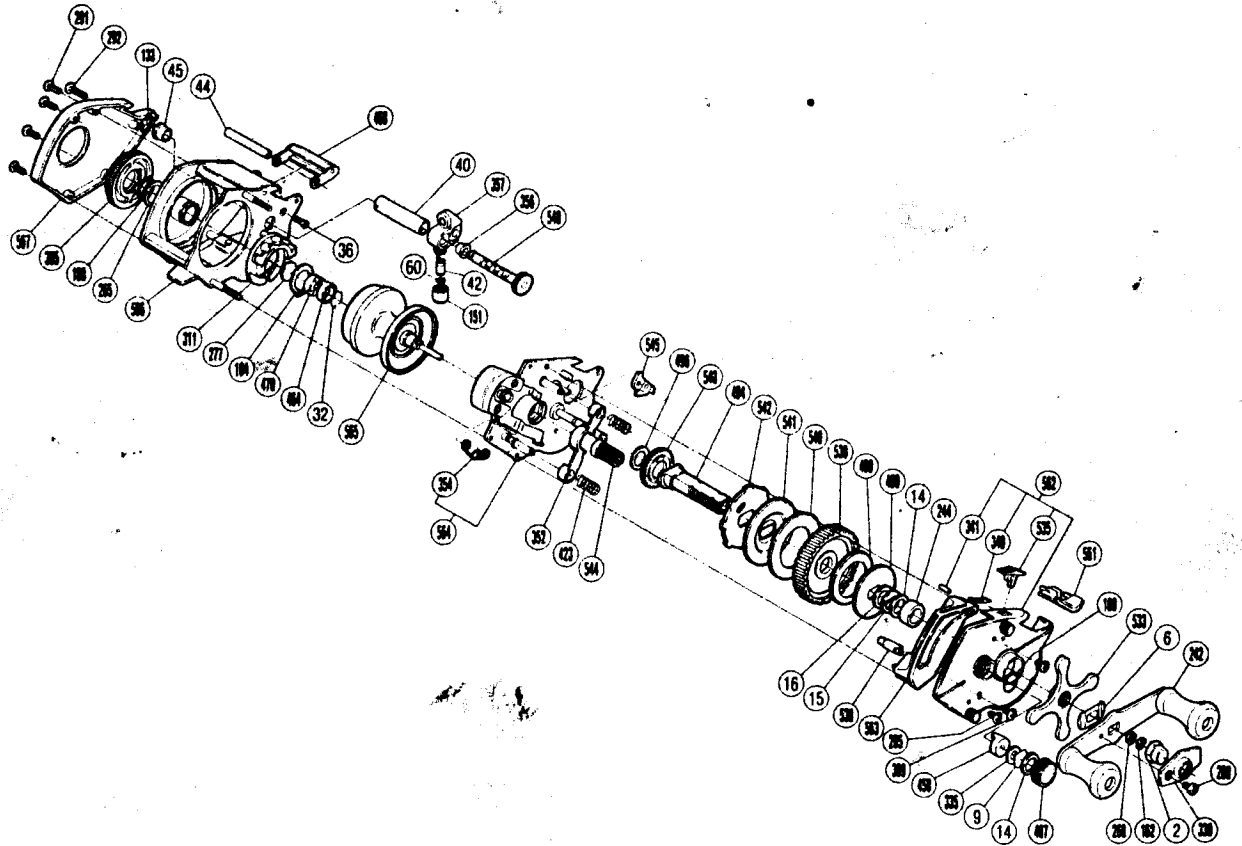


■EXPLODED PARTS VIEWS OF BSM-1550



■PARTS LIST OF BSM-1550

BNT No.	PARTS NAMES	BNT No.	PARTS NAMES
2	Handle Nut	354	Retractor Spring
6	Friction Washer "A"	356	Worm Bearing "A"
9	Cast Control Spacer	357	Line Guide
14	Friction Washer "B"	365	Magnetic Control Dial
15	Drag Spring Washer	399	Retractor Guide Screw
16	Friction Washer "C"	423	Yoke Spring
32	Bushing Retainer	458	Bushing "A"
36	Stabilizer Bar Screw "A"	464	Bushing Spacer
40	Level Wind Guard	468	Level Wind Protector
42	Line Guide Pawl	470	Bushing "C"
44	Stabilizer Bar	487	Cast Control Cap
45	Worm Bearing "B"	489	Key Washer "A"
60	Spacer (optional)	490	Drag Washer
133	Worm Shaft Retainer	494	Drive Shaft
151	Pawl Cap	496	Drive Shaft Washer "C"
162	Drive Shaft Retainer	533	Star Drag
184	Magnet Retainer Lock	535	Anti-Reverse Swich
188	O Ring	538	Retractor Guide
242	Handle Assembly	539	Drive Gear
244	Bushing "B"	540	Drive Shaft Washer "B"
265	Spacer (optional)	541	Key Washer "B"
268	Drive Shaft Washer "A"	542	Anti-Reverse Ratchet
277	Bushing Spacer "B"	543	Idle Gear
280	Handle Nut Plate Screw	544	Pinion Gear
285	Right Side Plate Screw	545	Anti-Reverse Pawl
291	Left Side Plate Screw	548	Worm Shaft
292	Stabilizer Bar Screw "B"	561	Right Side Plate Cover
311	Magnet Retainer	562	Right Side Plate
330	Handle Nut Plate	563	Clutch Button Attachment
335	Bushing Washer "A"	564	Set Plate Assembly
340	Switch Spring	565	Spool
341	Switch Spring Lock	566	Frame
352	Yoke	567	Left Side Plate