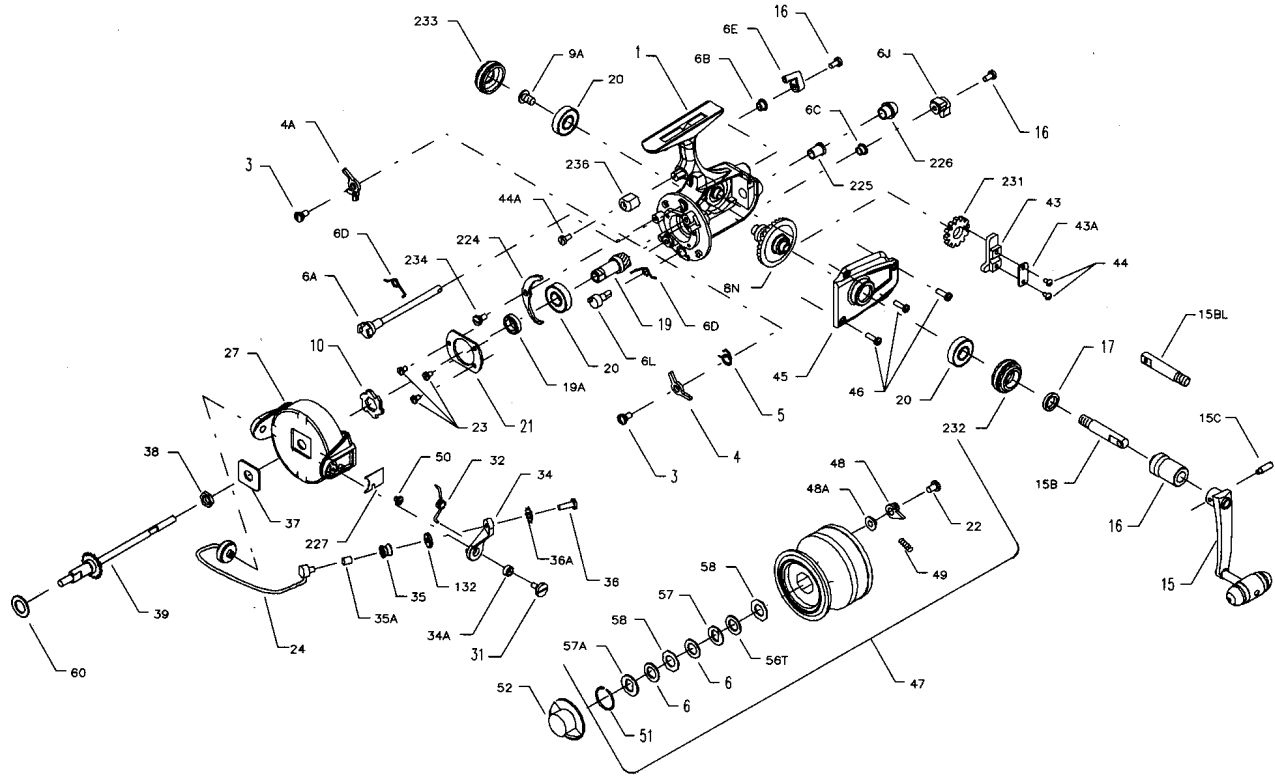




PARTS LIST FOR MODELS 750SS AND 850SS



KEY NO.	DESCRIPTION	PART NO.	KEY NO.	DESCRIPTION	PART NO.
1	Housing	1-750	34	Bail Arm	34-750
	Housing	1-850	34A	Bail Arm Bushing	34A-750
3	Dog Screw	3-750	35	Line Roller	35-750
4	Dog	4-750	35A	Roller Sleeve	35A-704
4A	Silent Dog	4A-750	36	Bail Stud Screw	36-750
5	Click Dog Spring	5-704	36A	Lock Washer	36A-750
6	Drag Washer-HT100	6-60	37	Rotor Washer	37-706
6A	Upper Eccentric	6A-750	38	Rotor Nut	38-710
6B	Upper Eccentric Liner	6B-750	39	Crosswind Shaft	39-750
6C	Silent Eccentric Liner	6B-704Z	43	Crosswind Block	43-750
6D	Eccentric Spring	6D-710	43A	Crosswind Block Plate	43A-750
6E	Anti-Reverse Lever	6E-750	44	Crosswind Block Screw	44-750
6J	Silent Dog Lever	6J-750	44A	Trip Bumper Screw	44-750
6L	Silent Eccentric	6L-750	45	Housing Cover	45-750
7	Pinion Bushing	*7-750	46	Housing Cover Screw (3 req.)	46-750
8	Main Gear	8-750	47	Spool (Complete)	47-750
9A	Standard Drive Screw	9A-750		Spool (Complete)	47-850
10	Ratchet	10-750	48	Click Tongue	48-750
15	Handle	15-750	48A	Click Tongue Washer	48A-750
15B	Standard Pivot	15B-750	49	Click Tongue Spring	49-710
15BL	Left Hand Pivot	15BL-850	50	Bail Spring Cover Screw	50-712
15C	Pivot Screw	15C-750	51	Retaining Ring	51-704
16	Collar	16-850	52	Drag Knob	52-750
16A	Eccentric Screw	16-910	56T	Drag Washer	56T-704
17	Seal Washer	17-750	57	Drag Washer Keyed (Small Dia.)	57-704
19	Pinion	19-750	57A	Drag Washer Keyed (Large Dia.)	57A-750
19A	Pinion Spacer	19A-750	58	Drag Washer (Octagon)	58-704
20	Bearing	20-700	60	Thrust Washer	60-750
21	Bearing Cover	21-750	132	Roller Washer	132-750
22	Spool Click Screw	22-750	224	Transfer Lever	224-750
23	Bearing Cover Screw	23-750	225	Crosswind Shaft Bushing	225-750
24	Bail Wire	24-750	226	Bushing Cap Cover	226-750
	Bail Wire	24-850	227	Bail Spring Cover	227-750
27	Rotor	27-750	231	Crosswind Gear	231-750
	Rotor	27-850	232	Bearing Cover (Open)	232-750
31	Bail Arm Screw	31-750	233	Bearing Cover (Closed)	233-750
32	Bail Arm Spring	32-750	234	Transfer Lever Screw	234-750
			236	Trip Bumper	236-750