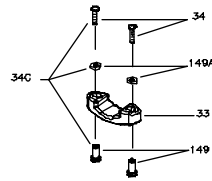
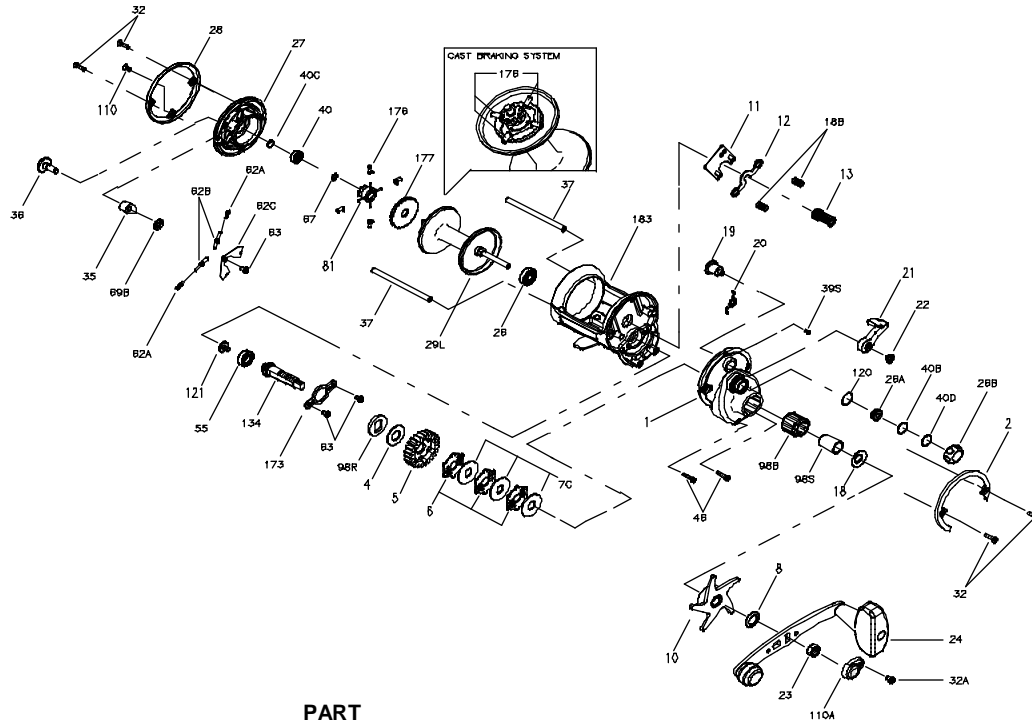




PARTS LIST FOR MODEL 525GS



KEY NO.	DESCRIPTION	PART NO.
1	Right Side Plate	001 525
2	Right Side Ring	002 525
4	Fiber Washer	004 060
5	Main Gear	005 545MAG
6	Friction Drag Washer (3 req.)	006 525MAG
7C	Metal Drag Washer	086 049L
8	Tension Spring Washer (1 req.)	008 060
10	Drag Star	010 525
11	Eccentric Jack	011 525
12	Pinion Yoke	012 555
13	Pinion Gear	013 545
18	Tension Spring Washer	018 505
18B	Clutch Spring (2 req.)	018 525
19	Eccentric	019 525
20	Eccentric Spring	020 525

KEY NO.	DESCRIPTION	PART NO.
21	Eccentric Lever	021 525
22	Eccentric Screw	022 310
23	Handle Nut	023 555
24	Handle	024 525
26	R.S. Spool Ball Bearing	026 025
26A	Right Side Bushing	026 555
26B	Spool Tension Control Cap	026B555
27	Left Side Plate	027 525
28	Left Side Ring	028 525
29L	Aluminum Spool Assembly	029L525
32	Frame Post Screw (4 req.)	032 310
32A	Handle Lock Screw	032 015
33	Rod Clamp	033 525
34	Rod Clamp Screw (2 req.)	034 045
34C	Rod Clamp Screws w/Nuts	034C045
35	Click Tongue	035 525
36	Click Button	036 525
37	Frame Post (2 req.)	037 525
39S	Right Side Plate Screw	039S965
40	L.S. Spool Ball Bearing	040 320
40B	Metal Thrust Washer	040C555
40C	Metal Thrust Washer	040C310
40D	Rubber Thrust Washer	040D555
46	Side Plate Screw (2 req.)	046 4300
55	Ball Bearing	020 722
62A	Click Spring (2 req.)	062 545
62B	Click Pin (2 req.)	062B525
62C	Click Spring Cover	062C525
63	Retainer Screw (3 req.)	063 500S
67	Lock Ring	067 009
69B	Retaining Ring	069B 600
81	Click Ratchet	081 525
98B	Anti-Reverse Bearing	098B 525
98R	Ratchet Spacer	098 525
98S	Clutch Shaft	098S 525
110	Side Plate Short Screw	110 050
110A	Handle Nut Lock Cap	110A 555
120	O-Ring	120 113H
121	Bearing Screw	121 525
134	Gear Stud	134 525
149	Rod Clamp Nut (2 req.)	149 045
149A	Rod Clamp Hex Nut (2 req.)	149 200
173	Bearing Retainer	173 525
176	Casting Brakes (4 req.)	176 965
177	Brake Selection Knob	177 965
183	Frame	183 525