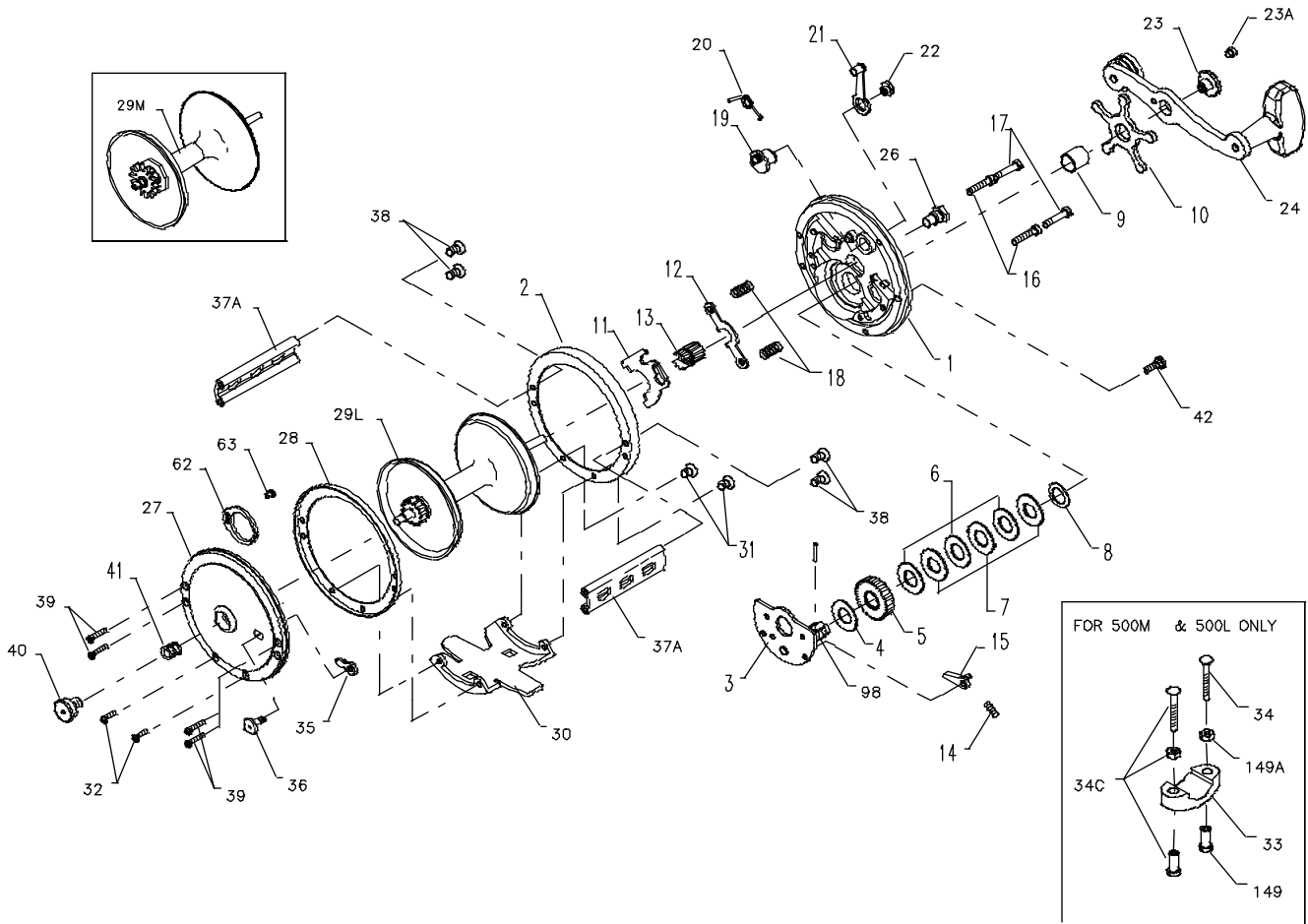




PARTS LIST FOR MODELS 500 AND 501 JIGMASTER



KEY NO.	DESCRIPTION	PART NO.	KEY NO.	DESCRIPTION	PART NO.
1	Right Side Plate	1N-500	26	Right Side Bearing	26-155
2	Right Side Plate	1N-501	27	Left Side Plate	28-250
3	Right Side Ring (Inner)	2-250	28	Left Side Ring (Inner)	29L-500
4	Bridge w/Sleeve	3-500	29L	Spool	29L-501
5	Fiber Washer	4-60	29M	Spool	29M-250
6	Main Gear	5-500	30	Stand (500)	30-200
7	Drag Washer (3 req.)	6-309	31	Stand (501)	30-49
8	Metal Washer Set	7C-500	32	R. S. Stand Screw	31-19
9	Tension Spring	8-60	33	L. S. Stand Screw	39-16
10	Spacing Sleeve	9-60	34	Rod Clamp (500)	33-113
11	Star Drag Wheel	10-505	34C	Ringed Rod Clamp (500) (Optional)	*33R-200
12	Eccentric Jack	11-99	35	Clamp Screw (500)	34-45
13	Eccentric Jack	11-99	34C	Rod Clamp Screw w/Nuts (500)	34C-45
14	Pinion Yoke	12-500	35	Click Tongue	35-60
15	Pinion	13-500	36	Click Button	36-60
16	Dog Spring	14-500	37A	Spacer Bar	
17	Dog	15-500		Spacer Bar	
18	Lower Bridge Screw	16-60	38	Right Side Post Screw	38-7
19	Upper Bridge Screw	17-60	39	Left Side Post Screw	39-5
20	Clutch Spring	18-60	40	Left Side Bearing	40-60
21	Eccentric	19-250	41	Bearing Spring	41-60
22	Eccentric Spring	20-60	42	Take Apart Thumb Screw	TA-200
23	Eccentric Lever	21-66	62	Click Spring	62M-309
24	Eccentric Screw	22-99	63	Click Spring Screw	31-2.5FR
23A	Handle Screw	23-60	98	Gear Sleeve	98-505
24	Handle (500)	24-66	149	Clamp Nut	149-45
	Handle (501)	24-155			

*Not Shown