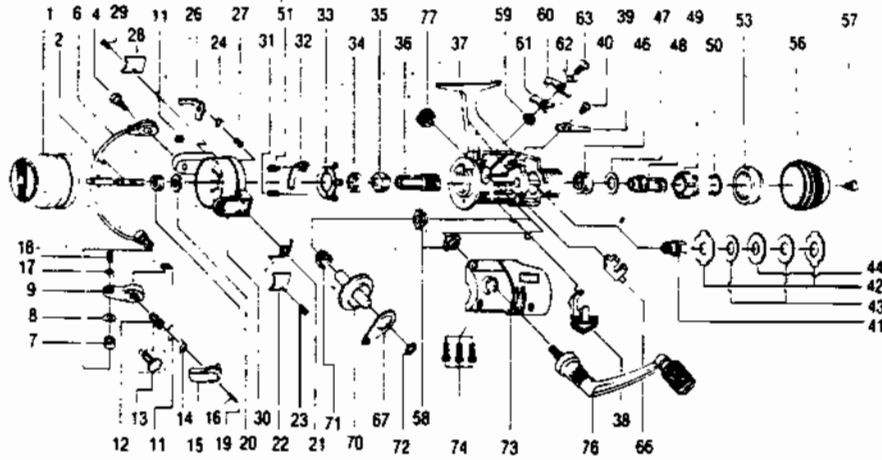


# QUANTUM QP05, QP20



## QP05

KEY PART NO. NO.	DESCRIPTION
1 HL321	SPOOL ASSY.
2 ST315	MAIN SHAFT ASST
3 ST051	BAIL HOLDER SCREW
4 ST347	BAIL ARM ASST.
7 ST004	LINE ROLLER
8 ST017	SLIDING SCREW
9 ST007	ARM LEVER
11 ST034	E-CLIP
12 ST113	TRIGGER HOLDER
13 ST111	ARM LEVER CAP
14 ST114	TRIGGER SPRING
15 ST115	TRIGGER
16 ST116	TRIGGER PIN
17 ST102	BAIL AXLE WASHER
18 ST108	BAIL AXLE SCREW
19 ST006	ROTOR NUT
20 ST065	ROTOR RETAINER
21 ST022	BAIL SPRINGS
22 ST087	BAIL SPRING COVER
23 ST085	BAIL SPR. COVER SCREW
24 ST049	KICK LEVER SCREW
26 ST019	KICK LEVER
27 ST037	KICK LEVER SCREW
28 ST024	KICK LEVER COVER
29 ST085	BAIL SPR. COVER SCREW
30 HL009	ROTOR ASSY.
31 ST080	BEARING PLATE SCREW
32 ST082	KICK LEVER GUIDE
33 ST040	BEARING PLATE
34 RB028	BALL BEARING
35 ST060	RATCHET GEAR
36 ST011	PINION GEAR
37 HL301	BODY ASSY.
38 ST059	ANTI-REVERSE LEVER
39 ST068	CLICK CLAM
40 ST085	BAIL SPR. COVER SCREW
41 ST104	SLIDER HOLDER
42 ST030	REAR DRAG WASHER 'A'
43 ST039	REAR DRAG WASHER 'B'
45 ST064	CLICK GEAR
46 ST043	REAR DRAG COIL SPRING
47 ST044	REAR DRAG ADJ. WHER.
48 ST112	REAR DRAG NUT
49 ST029	SLIDING SCREW
50 ST033	BACK CLICK CLAM
51 ST085	BAIL SPR. COVER SCREW
53 ST132	REAR DRAG STOPPER
56 HL032	REAR DRAG CAP
57 ST079	DRAG SCREW
58 ST013	BODY COVER BUSHING
59 ST091	A/R CLAM BUSHING
60 ST043	A/R CLAM (N)
61 ST064	A/R CLAM (S)
62 ST061	A/R CLAM SPRING
63 ST083	A/R CLAM SCREW
66 ST081	PIN SLIDER
67 ST025	OSCILLATING SLIDER
70 ST012	DRIVE GEAR
71 ST086	SLIDING SPRING
72 ST026	CRANK GEAR SHIM
73 HL323	BODY COVER ASSY.
74 ST057	BODY COVER SCREW
76 HL318	HANDLE ASSY.
77 ST073	HANDLE SCREW CAP
78 ST120	ROTOR RET. SPRG. W/S

## QP20

KEY PART NO. NO.	DESCRIPTION
1 JL321	SPOOL ASSY.
2 CT315	MAIN SHAFT
4 CT051	BAIL HOLDER PIN
6 CT347	BAIL ARM ASST.
7 CT004	LINE ROLLER
8 CT017	SLIDING SCREW
9 CT007	ARM LEVER
11 CT034	E-CLIP
12 CT113	TRIGGER HOLDER
13 ST111	ARM LEVER CAP
14 ST114	TRIGGER SPRING
15 ST115	TRIGGER
16 ST116	TRIGGER PIN
17 CT102	BAIL AXLE WASHER
18 CT108	BAIL AXLE SCREW
19 CT006	ROTOR NUT
20 CT065	ROTOR RETAINER
21 CT022	BAIL SPRING
22 CT087	BAIL SPRING COVER
23 CT085	BAIL SPR. COVER SCREW
24 CT049	KICK LEVER SCREW
26 CT019	KICK LEVER
27 ST037	KICK LEVER SCREW
28 CT024	KICK LEVER COVER
29 ST085	BAIL SPR. COVER SCREW
30 JL009	ROTOR
31 ST080	BEARING PLATE SCREW
32 CT082	KICK LEVER GUIDE
33 CT040	BEARING PLATE
34 ST028	BALL BEARING
35 ST060	RATCHET GEAR
36 CT011	PINION GEAR
37 JL301	BODY ASSY.
38 CT059	ANTI-REVERSE LEVER
39 CT068	CLICK CLAM
40 ST085	BAIL SPR. COVER SCREW
41 CT104	SLIDER HOLDER
42 CT030	REAR DRAG WHER 'A'
43 CT039	REAR DRAG WASHER 'B'
44 CT045	CLICK GEAR
46 CT043	REAR DRAG COIL SPRING
47 CT044	REAR DRAG ADJ. WHER.
48 CT112	REAR DRAG NUT
49 CT029	SLIDING SCREW
50 CT033	BACK CLICK CLAM
51 ST085	BAIL SPR. COVER SCREW
53 CT132	REAR DRAG STOPPER
56 JL032	REAR DRAG CAP
57 ST079	DRAG SCREW
58 ST013	BODY COVER BUSHING
59 ST014	A/R CLAM BUSHING
60 CT043	A/R CLAM (N)
61 CT064	A/R CLAM (S)
62 CT061	A/R CLAM SPRING
63 ST089	A/R CLAM SCREW
66 ST081	PIN SLIDER
67 ST025	OSCILLATING SLIDER
70 CT012	DRIVE GEAR
71 ST086	SLIDING SPRING
72 ST026	CRANK GEAR SHIM
73 JL323	BODY COVER ASSY.
74 ST057	BODY COVER SCREW
76 JL318	HANDLE ASSY.
77 CT073	HANDLE SCREW CAP
78 CT120	ROTOR RET. SPRG. W/S

\*Not shown in diagram  
Fits between keys 19 & 20

Prices subject to change without notice. Prices do not include postage and handling.

**PLEASE ORDER BY PART NUMBER**

Rev. 11/90

Zebco Division Brunswick Corporation, Box 270, Tulsa, OK 74101 USA 918-836-5581